

Abbey College Manchester
5-7 Cheapside,
Off King Street,
Manchester, M2 4WG
T: +44 (0)161 817 2700
E: admin@abbeymanchester.co.uk
www.abbeymanchester.co.uk

ABBEY
COLLEGE
MANCHESTER



Alpha Plus
group

Abbey College Manchester is part of the Alpha Plus Group Ltd.

BOARDING AT
ABBEY COLLEGE MANCHESTER

2021/22



BOARDING AT ABBAY COLLEGE MANCHESTER

Clydesdale House – New for September 2021

Clydesdale House is our brand new boarding house located in central Manchester, offering high-quality, safe accommodation within a 10 minute walk of Abbey College Manchester.

Clydesdale House has 24 hour on site Security, along with secure door entry system and CCTV cameras. There is also secure cycle storage, laundry facilities, onsite maintenance team, and cleaning of kitchens completed weekly.

Abbey College Manchester have exclusive accommodation on the top two floors of the building, with access restricted to our own students and staff. There are 35 single rooms in separate clusters for girls and boys.

Boarding accommodation for students aged 16 years and over on 1st September 2021

All rooms are en-suite with newly fitted modern bathrooms. Each cluster (approx 10 rooms) has a large kitchen equipped with hobs and ovens and plenty of fridge and freezer space. There is a large communal lounge in each cluster with a 50 inch television, a corner sofa and a table for socialising, study and activities.

Can my son/daughter go out of college on their own? Is there a curfew?

Yes, students may leave the college to experience Manchester, however, safety is our main priority. Students can apply for a five-hour day pass for going out at weekends. This can be used for shopping, gym, movies, restaurants or attending sports events, such as a football match. All students are subject to a curfew.



ROOM TYPES

What room types do you offer?

Standard En-Suite

Each room contains all necessary amenities including 3/4 size bed, wardrobe, cupboards, desk and lamp for study and a private bathroom.

Corner En-Suite

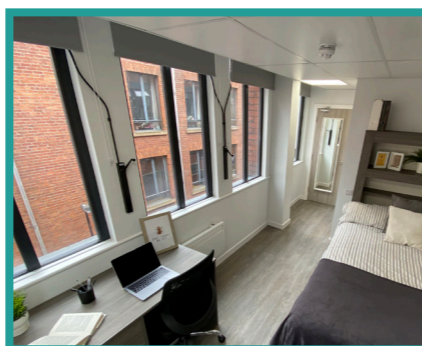
Students who prefer a room with more space and a better view of the city should opt for a Corner room. Preferences should be requested at point of booking. *But please note that preferences can not be guaranteed*

Premium En-Suite

These are large rooms with even more space and have a separate study area, including an armchair. Preferences should be requested at point of booking. *But please note that preferences can not be guaranteed*



Standard En-Suite Room



Corner En-Suite Room



Premium Suite



What is including in the boarding fees?

- Room for requested duration (Please note the boarding will be closed at Christmas and during the summer)
- Three meals per day. Breakfast, packed lunch and dinner all prepared by our in-house cook
- Large shared kitchen, fully equipped with a wide range of appliances such as ovens, toasters, kettles, etc.
- Large shared living area, with sofa, dining table and 50 inch television
- Good Wi-Fi connection
- Weekly bathroom cleaning
- Bed linen & towels
- Full-time Houseparents on-site 24 hours
- All laundry
- Indoor bike storage
- Activities programme arranged by Houseparents. (Please note some external trips will have an extra charge.)

For a virtual tour of a standard room scan the QR Code





BOARDING FEES

Standard En-Suite	£13,900 per annum
Corner En-Suite	£14,900 per annum
Premium En-Suite	£16,500 per annum

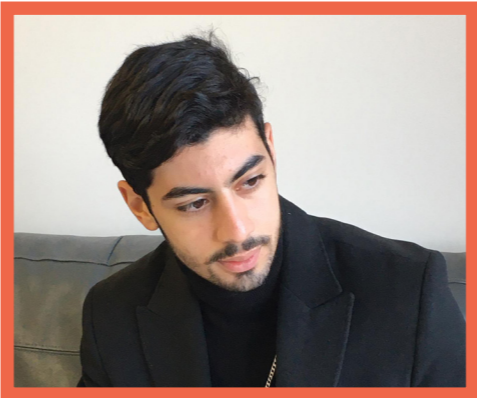
Accommodation is open from the start of the academic year, September 2021 until the end of the year in June 2022. Students must vacate their rooms for the Christmas and Summer Holidays, but the boarding house is open during all other college holidays.

Who can I speak to if I have more questions?

Our Boarding Director, Marc Arrowsmith will be happy to answer any more questions you may have.
 He can be contacted via email at marc.arrowsmith@abbeymanchester.co.uk or by telephone on +44(0)161 8172700.



“I **LOVE** THE SENSE OF **COMMUNITY**, EVERYONE IS SO **WELCOMING** AND **KIND**. THE **HOUSEPARENTS** ARE SO GREAT AND IT’S **SO MUCH FUN** TALKING TO THEM, THERE IS **ALWAYS** SUPPORT.”
LUJAIN, EGYPT



“ACM IS **LOCATED** IN THE CENTRE OF MANCHESTER SO THERE’S **MUCH** YOU CAN DO. I WAS ABLE TO **MEET** PEOPLE FROM **ALL OVER** THE WORLD AND FORM **LIFE-LONG** FRIENDSHIPS.”
ARIA, IRAN