

Abbey College Manchester  
5-7 Cheapside,  
Off King Street,  
Manchester, M2 4WG  
T: +44 (0)161 817 2700  
E: admin@abbeymanchester.co.uk  
www.abbeymanchester.co.uk

ABBEY  
COLLEGE  
MANCHESTER



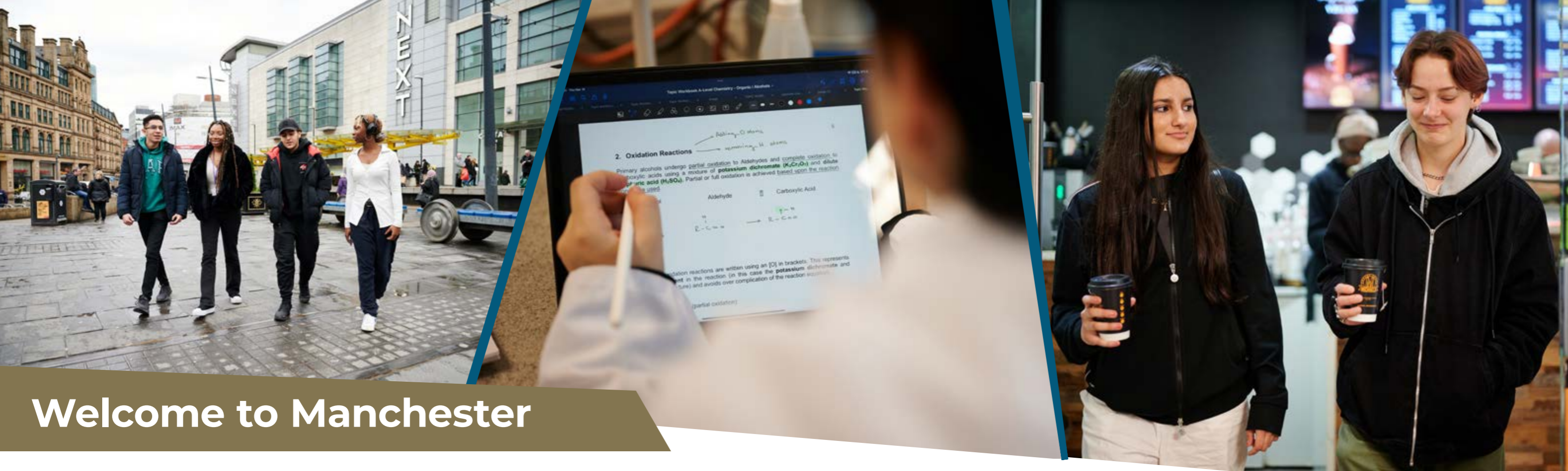
ABBEY DLD  
GROUP OF COLLEGES

Abbey College Manchester is part of the Abbey DLD Group of Colleges

# ABBEY COLLEGE MANCHESTER ACCOMMODATION GUIDE

2024/25





# Welcome to Manchester

Living away from home for the first time, is exciting and a bit daunting.

At Abbey College Manchester you will be part of our supportive community and we understand the importance of finding the right accommodation for you. Our accommodation choices allow our students to select the level of support that is right for them. All students will have their accommodation choice confirmed before they arrive in the UK and we will assist with transfers. Once you have arrived in Manchester you will receive an induction to living in the UK and the college to ensure your first few days are as simple and stress-free as possible.

The College works with students and their family both to select the right accommodation for them and, once the student has arrived, to offer support and guidance throughout their time in the UK. We believe that a student's home life is an important part of their experience of studying abroad and that the accommodation must allow the student to live and study effectively. Our Accommodation Team's main aim is to ensure that all students are happy in their accommodation and that all of their welfare needs are met.

If you would like to hear more about the services that we can offer, please contact me.

**Marc Cronin**  
Assistant Principal - Boarding and Pastoral



All of our accommodation choices offer, modern, clean and safe accommodation, and they all share the following features.

- Wi-Fi
- Weekly room clean
- Bed linen and towels
- Full board meal plans
- On-site laundry facilities
- Weekend and evening activities
- Student's health needs supported by our college nurse, with all students registered with the local GP
- Dedicated male and female floors/blocks in our boarding house

The Accommodation choices for our students depend on their age:

**Students aged 16 or above** at the start of the academic year have the choice to either stay with a host family or in the Boarding House – Clydesdale House.

**Students under 16** at the start of the academic year must stay with a host family unless they live with a parent or other blood relative (i.e. aunt or uncle; grandparents or a brother or sister over the age of 25).





# BOARDING AT ABBEY COLLEGE MANCHESTER

## **Clydesdale House**

Clydesdale House is our boarding house located in central Manchester, offering high-quality, safe accommodation within a 10 minute walk of Abbey College Manchester.

Clydesdale House has 24 hour Security, along with secure door entry system and CCTV cameras. There is also secure cycle storage, laundry facilities, onsite maintenance team, and cleaning of kitchens completed weekly.

Abbey College Manchester has single study en-suite bedrooms in separate clusters for males and females spread over the four floors of Clydesdale House.

## **Boarding accommodation for students aged 16 years and over on 1st September 2024**

All rooms are en-suite with newly fitted modern bathrooms. Each cluster (approx 10 rooms) has a large kitchen equipped with hobs and ovens and plenty of fridge and freezer space. There is a large communal lounge in each cluster with a 50 inch television, a corner sofa and a table for socialising, study and activities.

## **Can my son/daughter go out of college on their own? Is there a curfew?**

Yes, students may leave the college to experience Manchester, however, safety and welfare is our main priority. Students can apply for a five-hour day pass for going out at weekends. This can be used for shopping, gym, movies, restaurants or attending sports events, such as a football match. All students are subject to a curfew.





# ROOM TYPES

## What room types do you offer?

### Standard En-Suite

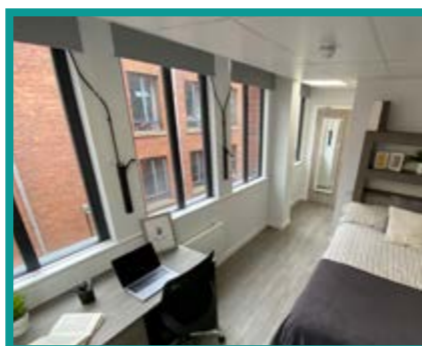
Each room contains all necessary amenities including 3/4 size bed, wardrobe, cupboards, desk and lamp for study and a private bathroom.



Standard En-Suite Room

### Deluxe En-Suite

Students who prefer a room with more space should opt for a Deluxe room. Preferences should be requested at point of booking\*.



Deluxe En-Suite Room

### Premium En-Suite

These are large rooms with even more space and have a separate study area, including an armchair. Preferences should be requested at point of booking\*.



Premium En-Suite

\* Please note that preferences can not be guaranteed

MONDAY	Jollof Rice	Fried Plantain	Coleslaw
TUESDAY	Asian Halal Chicken Stir Fry	Noodles	Salad Bar and Vegetables
WEDNESDAY	Mexican Beef Tacos	Salad Bar	Various Dips
THURSDAY	Italian Beef Meatballs served with Spaghetti	Garlic Bread	Salad Bar
FRIDAY	Thai Red Curry with Halal Chicken	Noodles	Vegetables
SATURDAY	Homemade BBQ Chicken Pizzas	Potato Wedges	Salad Bar and Vegetables
SUNDAY	Roast Chicken Dinner with all the trimmings.	Yorkshire Puddings, Gravy, Roast Potato & Vegetables	

Vegetarian Options are Always Available

Example of a weekly evening meal plan. Menus rotate on a three week basis.

## What is included in the boarding fees?

- Room for the full academic year (Please note the boarding House will be closed at Christmas and during the summer)
- Three meals per day; Breakfast, packed lunch and dinner all prepared by our in-house cook
- Large shared kitchen, fully equipped with a wide range of appliances such as ovens, toasters, kettles, fridges/freezers etc.
- Large shared living area, with sofa, dining table and 50 inch television
- Good Wi-Fi connection
- Weekly bathroom cleaning
- Bed linen & towels
- Experienced full-time Houseparents on-site 24 hours
- All laundry
- Indoor bike storage
- Activities programme arranged by Houseparents. (Please note some external trips will have an extra charge.)





# Host Family Accommodation

## Our Host Families

Our Host Families are carefully selected to ensure a friendly, safe, secure environment in which students can study, relax and integrate into the family. All our families are checked by the UK government Disclosure and Barring Scheme (DBS) and are also visited at home, and invited into the college for an interview, before we confirm them as a Host Family. Our families reflect the mix of cultures and people who live in Manchester - and can range from families with young children, to people whose own children have grown up and moved out, through to retired couples. Some have pets, usually cats or dogs, but students will always be asked if they are happy living with pets.

Students are encouraged to spend time with their Host Family in the evenings and weekends, as this gives them the best chance to build a good relationship with their Host and to experience British culture and lifestyle.

## Facilities

Each student will have their own bedroom with a desk, chair and storage for their clothes (wardrobe and/or chest of drawers).

Bathroom facilities are usually shared with the family - however, in some cases the house will have two bathrooms and so sometimes the student will have a bathroom for their exclusive use.

All homes have internet access, and have a TV in the living room.

## Meals

Accommodation is offered on a Full-Board basis 7 days a week, which includes breakfast, packed lunch, and an evening meal each day.

Students are encouraged to eat with the host family as this is an important aspect of socialising and an ideal opportunity to practise their English.

Meals will be very different to a student's normal expectations, but this is part of adapting to British life. Host families will cater for special diets if requested.





# BOARDING FEES

<b>Standard En-Suite</b>	£16,300 per annum
<b>Deluxe En-Suite</b>	£17,400 per annum
<b>Premium En-Suite</b>	£19,300 per annum
<b>Host Family</b>	£13,700 per annum

Accommodation is open from the start of the academic year, September 2024 until the end of the year in June 2025. Students must vacate their rooms for the Christmas and Summer Holidays, but the boarding house is open during all other college holidays.

## Who can I speak to if I have more questions?

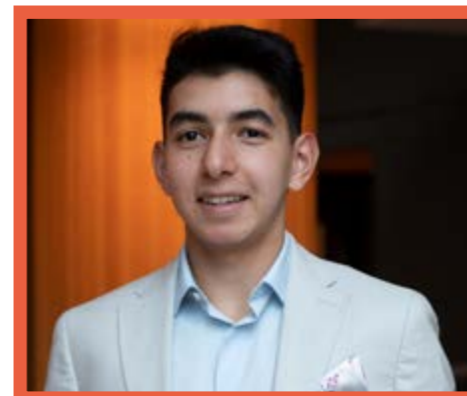
Our Assistant Principal and Director of College Operations, Iain Stewart, will be happy to answer any more questions you may have.

He can be contacted via email at [iain.stewart@abbeymanchester.co.uk](mailto:iain.stewart@abbeymanchester.co.uk) or by telephone on +44(0)161 817 2700.



"I REALLY **ENJOYED MEETING** NEW PEOPLE FROM DIFFERENT COUNTRIES AND THROUGH THIS I LEARNED ABOUT **NEW CULTURES** AND TRIED NEW FOOD. IT WAS **GREAT LIVING** WITH MY **FRIENDS** AT CLYDESDALE HOUSE."

**NATASHA, NIGERIA**



"I HAVE FOUND **MANCHESTER** TO BE THE PERFECT PLACE FOR STUDENTS AS YOU CAN HAVE **A LOT OF FUN**, DESPITE THE CITY NOT BEING THAT BIG. I LIVED WITH A **HOST FAMILY** AND THEY MADE SURE THAT I ALWAYS FELT **COMFORTABLE** AND WERE VERY **SUPPORTIVE.**"

**SAIDKHON, AZERBAIJAN**